

Model Heavy Industry in N Scale

Sirens scream and a white-hot stream of molten iron flows from the blast furnace. Moved to the electric furnace, it's mixed with scrap and superheated to burn out impurities before being poured to form a steel ingot. Still aglow with its inner fire, the ingot screams as it's drawn into the jaws of the rolling mill, where it will soon emerge as heavy steel beams for a new office building.

Whether part of existing operations, or the central theme of a layout, nothing can beat the steel industry for all-out modeling challenge and excitement.

Now, it's easy to model, with this all-new series of N Scale Cornerstone Series kits.

Engineered for easy construction, this new collection of structures brings you everything you need to add this amazing industry to your N Scale layout. Used together to build a complete operation, or by themselves to suggest a much larger steel works, the kits capture the look and feel of the prototypes — in a size that fits an average layout. With plastic parts molded in colors and complete instructions, assembly is fast and easy. And, with a little kitbashing, you can model even more modern industrial operations.

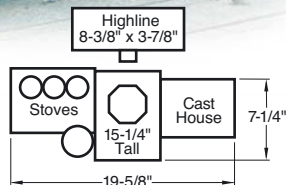


Back by Popular Demand!

Blast Furnace

933-3249 \$129.98 January Delivery

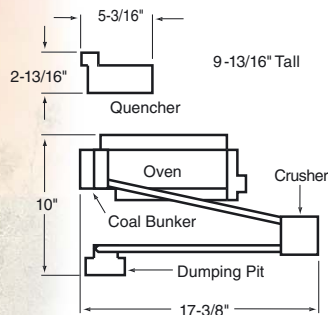
- Must-Have for any Steel Works
- Complete Kit
- Includes furnace, stoves, dust collectors & cleaning system, piping, cast house, hearth, skip hoist, high line supports — over 300 parts in all!



Coke Ovens & Quencher

933-3806 \$79.98 January Delivery

- Features Crusher, Smokestack & Quench Tower
- Realistic Metal Siding
- Detailed Doors
- Stairs & Platforms



Back by Popular Demand!

Rolling Mill

933-3250 \$49.98 January Delivery

- Detailed "Steel" Construction
- Modular Design for Easy Expansion
- Optional Cut-Out End Doors & Walls
- Simulated Rails on Baseplate
- Build with Monitor or Round Roof Vents
- Decal Sheet with Safety Signs
- Typical Building for Many Modern Industries

7 x 11-3/8"
9-5/8" Tall



Electric Furnace

933-3807 \$79.98 February Delivery

- Great Addition to Steel Works
- Use as Free-Standing Mini-Mill
- Optional Cut-Out End Doors
- Includes J Hooks, Spreaders & Other Details
- Crane Rails Fit Heavy-Duty Overhead Crane 933-3810 (Sold Separately)
- Modular Construction for Easy Customizing

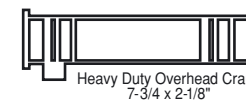
Electric Furnace 8-3/4 x 8-1/8 x 10" Tall



Heavy-Duty Overhead Crane

933-3810 \$14.98 January Delivery

- Great for any Heavy Industry
- 250-Ton Capacity Prototype
- Maximum Detail, Easy Construction.
- Fits Crane Rail Inside Electric Furnace 933-3807 (Sold Separately)
- Dual Trolleys, Hooks, Motor Details & Operator's Cab



Diesel Power to Drive your New Industry



EMD GP38-2 with 88" Nose \$99.98 Each

With a nonstop appetite for raw materials, and a steady stream of finished products that have to ship to customers on time, a steel works is no place for locos that aren't up to the job. Make sure your railroad is ready with a fleet of PROTO N GP38-2s. Based on later production models with an 88" nose and available in a wide range of schemes, these rugged haulers come ready to take on any job.

- Clip-Fit Printed Circuit Board
- Diecast Split-Frame Chassis
- With or Without Dynamic Brakes
- Hi-Ad or Standard Truck Sideframes
- Large or Small Fuel Tank
- Add-On Plows & Winterization Hatch
- Directional LED Headlights
- AccuMate® Knuckle Couplers
- Standard N Scale Couplers Included
- Razor-Sharp Paint & Lettering
- Fully-Assembled, Ready for Service

Second Series January Delivery
New Roadnames • Printed Sight Glass

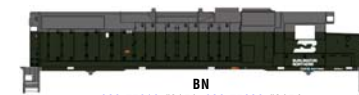
First Series
In Stock – Limited Quantities Available



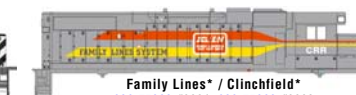
ATSF ("Warbonnet" blue, yellow)
920-75017 #3563 920-75018 #3570



BNSF
920-75000 #2371 920-75001 #2373



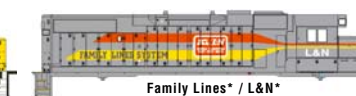
BN
920-75019 #2151 920-75020 #2154



Family Lines* / Clinchfield*
920-75002 #6001 920-75003 #6003



CNW* (yellow, green)
920-75021 #4629 920-75022 #4632



Family Lines* / L&N*
920-75004 #6022 920-75005 #6043



CONRAIL
920-75023 #8206 920-75024 #8227



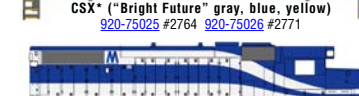
NS
920-75006 #5334 920-75007 #5385



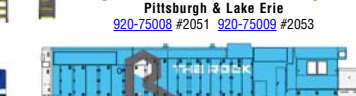
CSX* ("Bright Future" gray, blue, yellow)
920-75025 #2764 920-75026 #2771



Pittsburgh & Lake Erie
920-75008 #2051 920-75009 #2053



Long Island Railroad
920-75027 #257 920-75028 #271



Rock Island
920-75010 #4374 920-75011 #4379



MP*
920-75029 #2138 920-75030 #2164



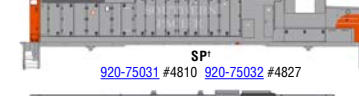
Seaboard System*
920-75012 #2680 920-75013 #2690



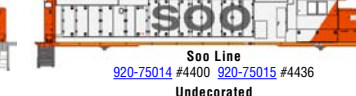
SP*
920-75031 #4810 920-75032 #4827



Soo Line
920-75014 #4400 920-75015 #4436



UP*
920-75033 #2139 920-75034 #2142



Undecorated
920-75035 No Dynamics, Standard Truck Sideframes & Large Fuel Tank



Undecorated
Hi-Ad Truck Sideframes & Small Fuel Tank



From Walthers

Can't find a hobby shop near you? Call 1-800-4TRAINS (1-800-487-2467) or visit walthers.com.

*CSX proprietary marks used by permission of CSX Transportation, Inc. *Union Pacific licensed product. Accumate® couplers are made under license from Accurail, Inc.

Preproduction models shown, some details may vary. Additional figures, vehicles and accessories shown sold separately. Delivery dates shown were accurate at press time — for updates, please visit walthers.com ©2006 Wm. K. Walthers, Inc.